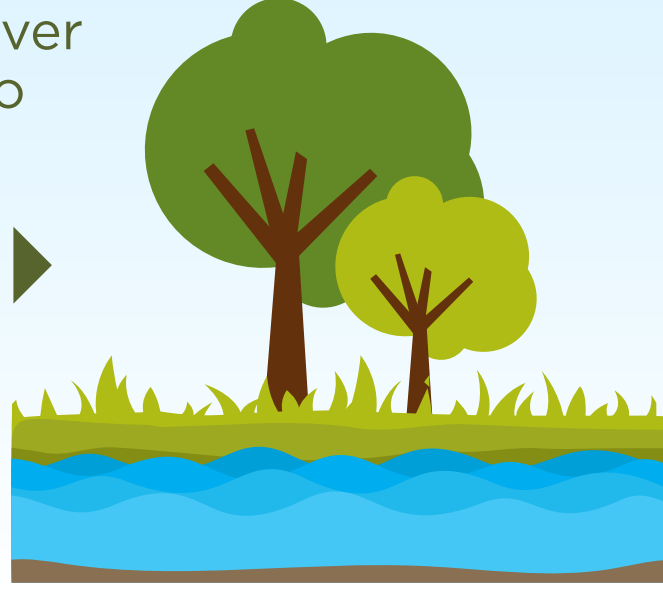


**GEO SYNTHETIC**  
SYSTEMS

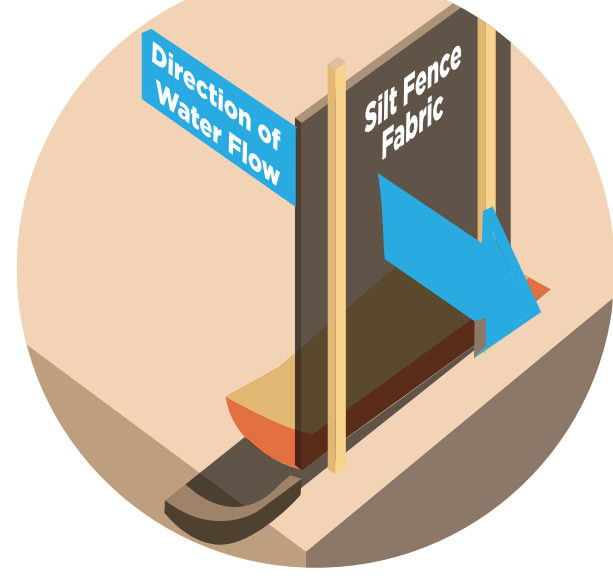
# SILT CURTAINS

## TO PROTECT THE ENVIRONMENT

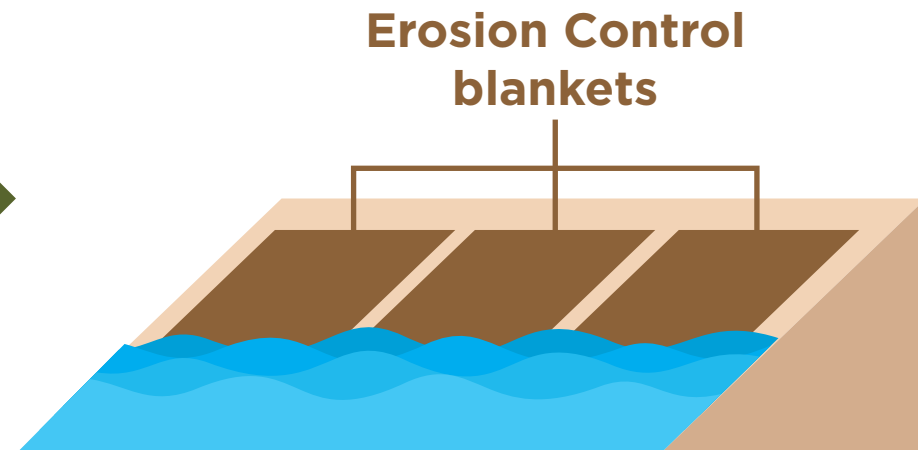
Naturally, plant cover protects soil from wind and rain erosion, but wherever runoff makes it into our waterways, gravity deposits a bed layer of silt. Even underwater, plant cover anchors silt in place.



Quite unnaturally, though, construction encourages erosion and kicks up silt deposits, which can negatively impact the environment.



**Silt Fences**



**Erosion Control blankets**

Geosynthetic Systems erosion and sediment control products, such as silt fences and erosion control blankets, slow erosion.

Geosynthetic Systems silt curtains reduce the environmental impact construction can have on our waterways. Why is even naturally-occurring silt a problem on construction sites and how do silt curtains reduce the impact?

### SILT

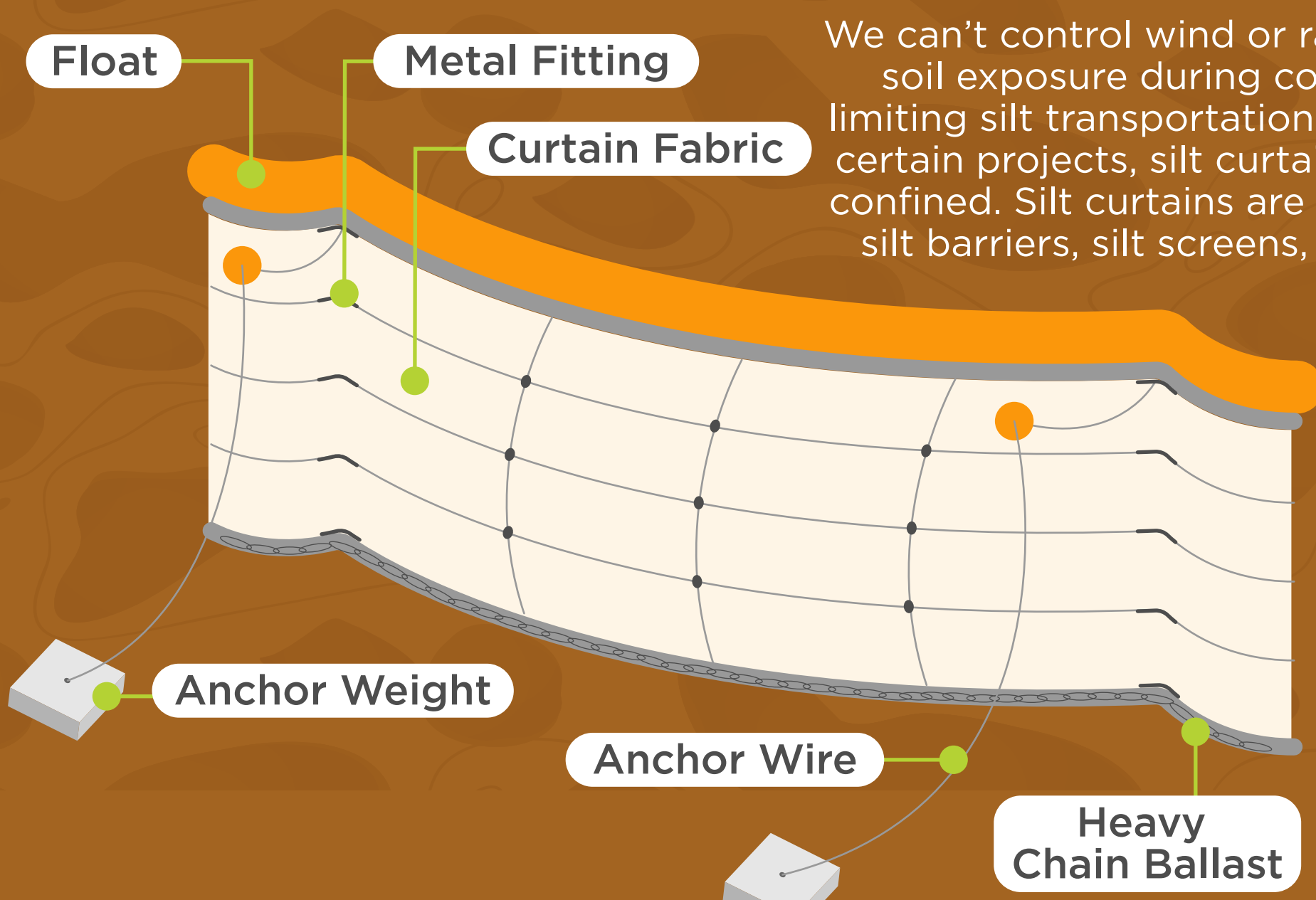
#### WHAT'S THE PROBLEM?



Whether manmade or naturally-occurring, every waterway and body of water has silt, particles lighter than sand. Runoff from unprotected soil, silt remains in suspension until the water reaches a calm zone. Construction activities generate additional silt runoff and may kick up silt deposits.

Excess silt in suspension can be disastrous for both animal and plant life. Fish, insects and other animals may escape silt-laden waters, but plants and most shellfish suffocate. Silt also blocks sunlight vital for the growth of water plants.

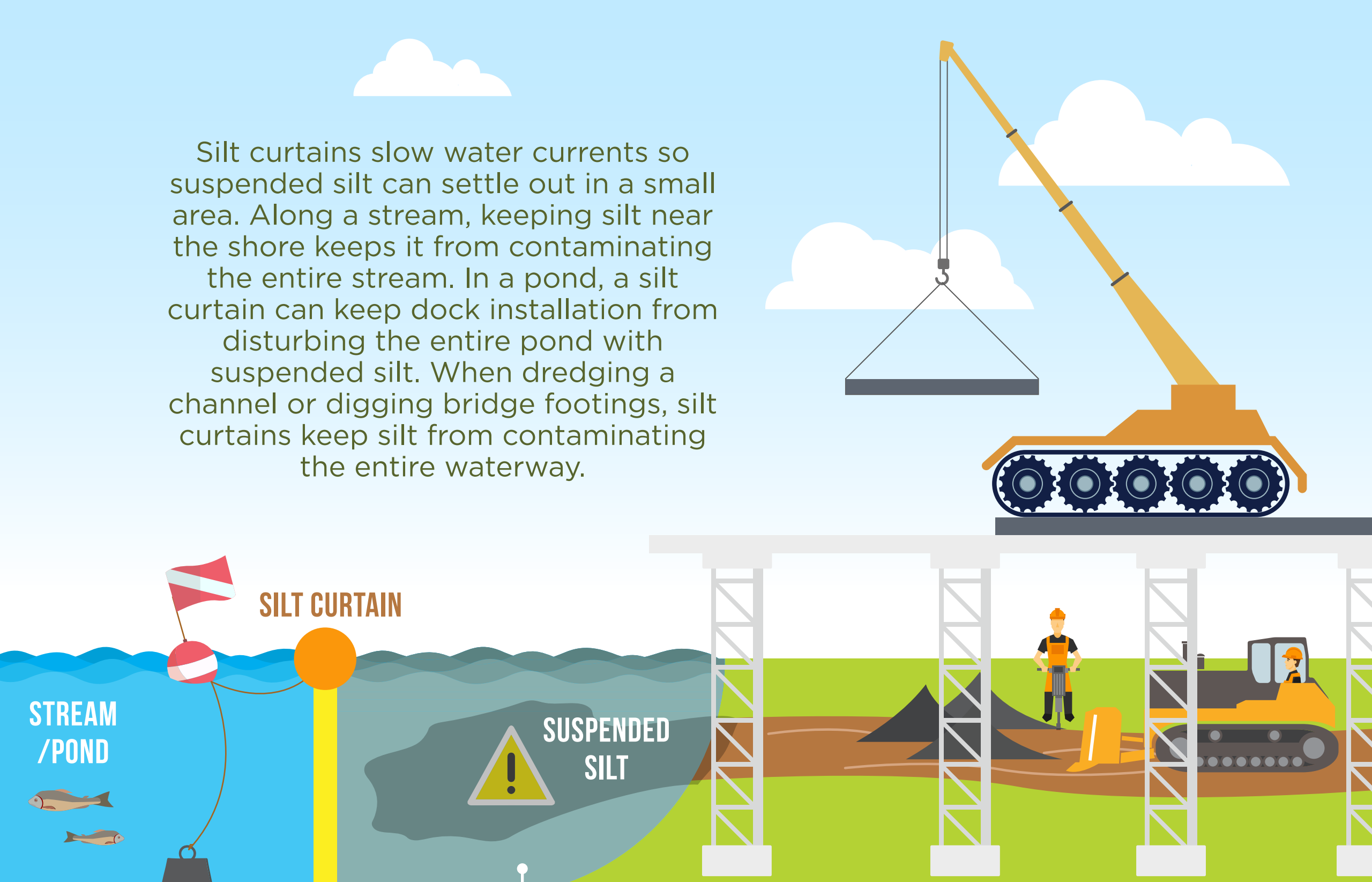
#### HOW SILT CURTAINS REDUCE ENVIRONMENTAL IMPACT



We can't control wind or rain, but we can control soil exposure during construction projects, limiting silt transportation to our waterways. For certain projects, silt curtains keep turbid waters confined. Silt curtains are also known as floating silt barriers, silt screens, turbidity curtains, or turbidity barriers.

Silt curtains are suspended from floats, with heavy chain ballast to maintain an upright position, restricting the flow of water and spread of silt. Cables and stays link multiple sections and anchor them to the shore and bottom.

Silt curtains slow water currents so suspended silt can settle out in a small area. Along a stream, keeping silt near the shore keeps it from contaminating the entire stream. In a pond, a silt curtain can keep dock installation from disturbing the entire pond with suspended silt. When dredging a channel or digging bridge footings, silt curtains keep silt from contaminating the entire waterway.



Anchors and stays maintain the silt curtain's shape for maximum effectiveness.

Silt curtains anchor to the shore, surrounding the construction area.

The bulk of turbid water near the surface is contained, preventing it from contaminating surrounding waters.

Permeable silt curtains allow for minimal current flow, retaining the bulk of turbid water and reducing stress on the curtain assembly.

Effective silt curtain design and installation depends on exposure, wind, current, job type, and other factors.



**EXPOSURE**



**WIND**



**CURRENT**

### GEO SYNTHETIC SYSTEMS SILT CURTAINS

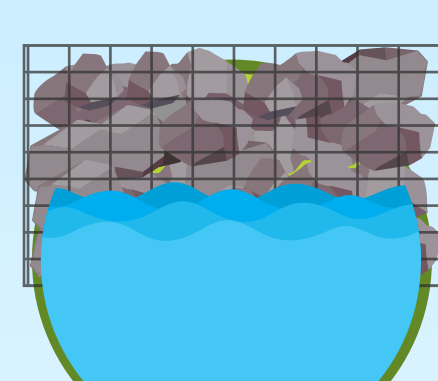
Geosynthetic Systems is the **#1** soil management company in Eastern Ontario and has been providing erosion & sediment control products for landscape, civil construction and shoreline restoration projects longer than any other business in the national capital region.



**CIVIL CONSTRUCTION**



**LANDSCAPE CONSTRUCTION**



**SHORELINE RESTORATION**

We know what silt can do to a stream, river, pond, lake or harbor, and we know how to control it. If your construction or restoration project might impact nearby waters, consult Geosynthetic Systems experts.

We'll work with you to provide an environmentally-friendly solution which fits your project, your budget, and your schedule.

